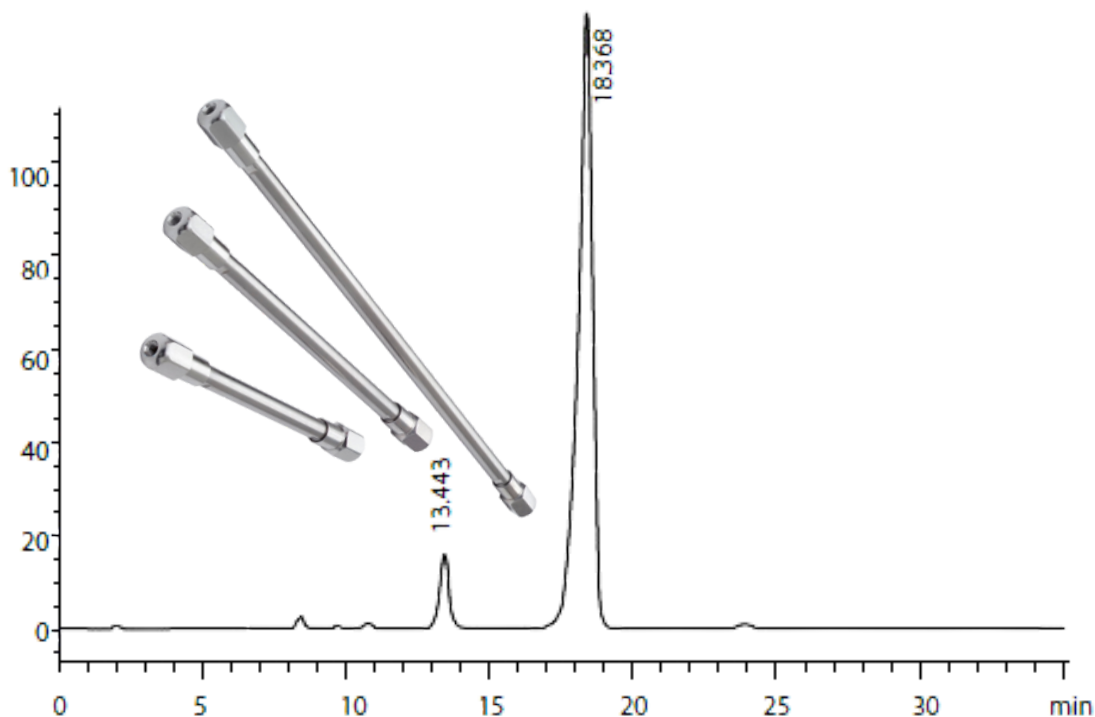


RSolv[®]

CHROMATOGRAPHY PRODUCTS



Specifications of RSolv - *Capella* HPLC Phases

Phase	Particle Size (um)	Pore Size (A)	Surface Area (m ² /g)	Carbon Load (%)	Endcapped	USP	Phase Code
C18	3,5,10	100	325	19	Yes	L1	01
C8	3,5,10	100	325	11	Yes	L7	02
C6	3,5,10	100	325	8	Yes	L15	03
C4	3,5,10	100	325	6	No	L26	04
Phenyl	3,5,10	100	325	12	Yes	L11	05
PFP	3,5,10	100	325	9	Yes	L43	06
CN	3,5,10	100	325	6	No	L10	07
AMIN	3,5,10	100	325	4	No	L8	08
DIOL	3,5,10	100	325	4	No	L20	09
Silica	3,5,10	100	325	n/a	n/a	L3	10



Plot No 39, 1st Floor, Lavanya Arcade, Jayabheri Enclave, Gachibowli, Hyderabad. 500084, Telangana,
 Mob : +91 99082 46685, Tel : 040 - 35172288,35172289

CALL US FOR MORE INFO



info@rikiglobal.com



www.rikiglobal.com



9908246695

